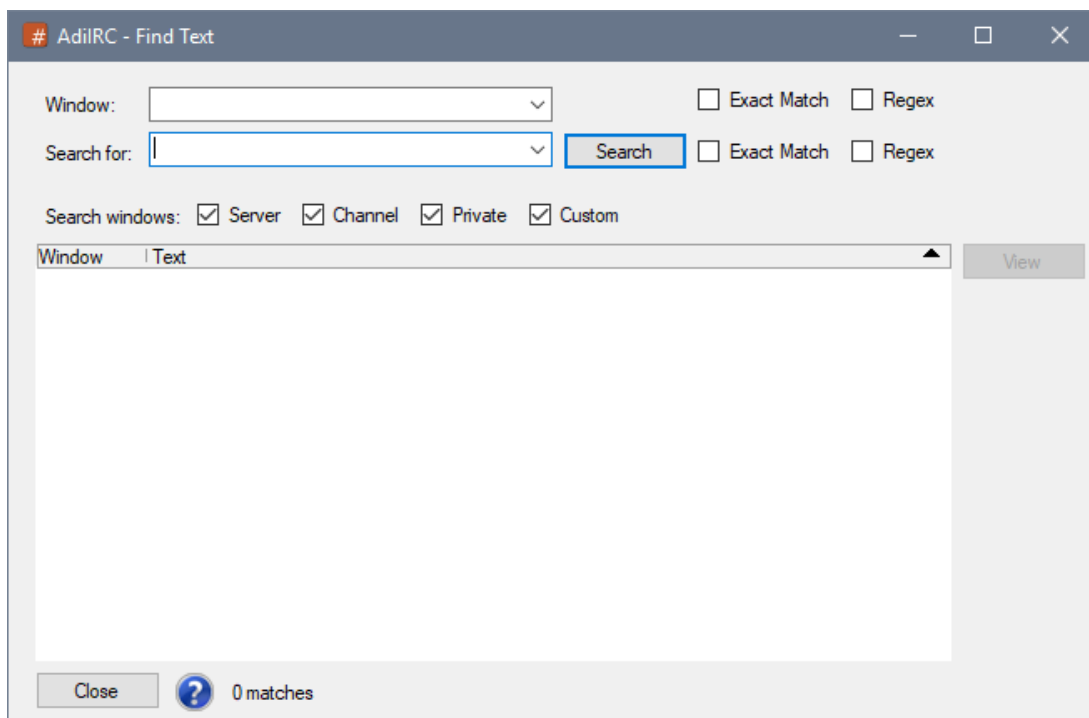


Find Text Dialog



The dialog can be accessed by pressing CTRL + SHIFT + F or by clicking Menubar -> Tools -> Find Text.

Allows search all open windows for matched text.

Double-clicking a match result, pressing Enter or clicking the **View** button will focus the window and highlight the matched line.

Pressing F5 will run the search again.

See also [/findtext](#), [/search](#).

Window

Searches only windows matching the specified window name.

Search for

The text to search for.

Exact Match

If checked, searches for case-sensitive match.

Regex

If checked, searches using a [regular expression](#) pattern.

Search Server Windows.

If checked, searches all open server windows.

Search Channel Windows.

If checked, searches all open channel windows.

Search Private Windows.

If checked, searches all open private windows.

Search Custom Windows.

If checked, searches all open @custom windows.

View

Focus the matched window and highlights the matched text.

Files

findtext.png	10.6 KB	06/26/2017	Per Amundsen
findtext.png	12.5 KB	01/22/2019	Per Amundsen