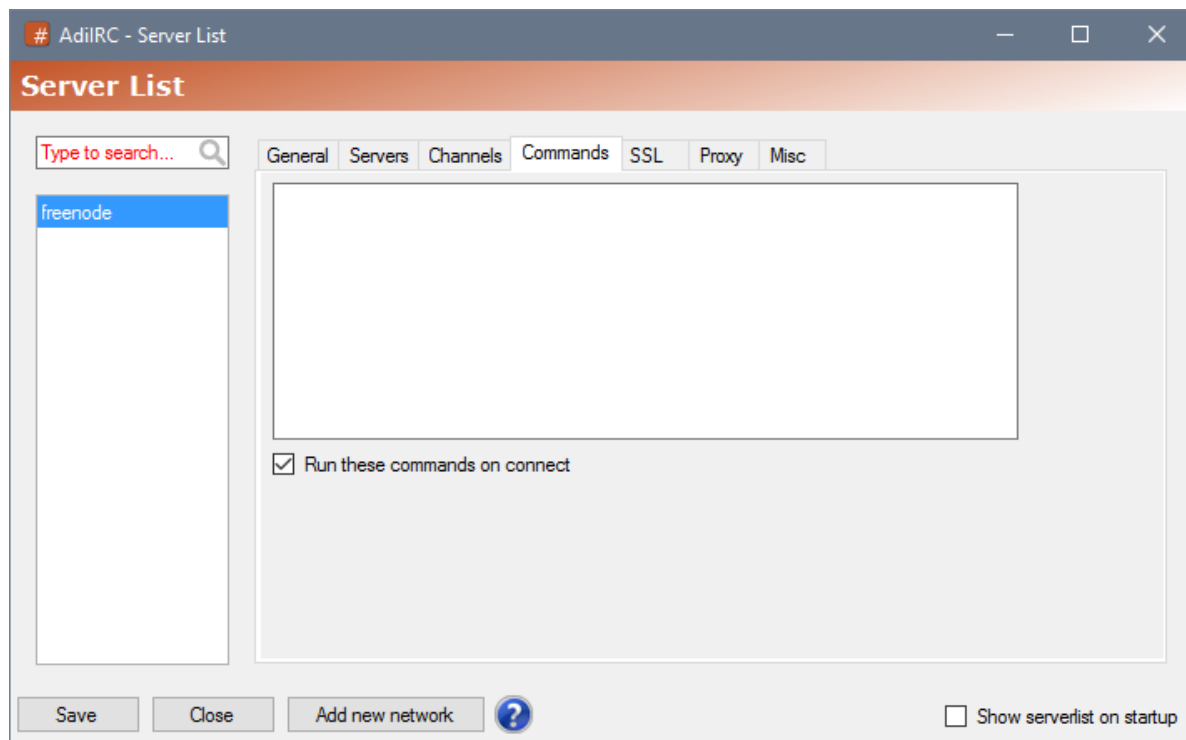


Serverlist Commands

In the commands tab, you can add commands to perform when the server is connected.



See also [/perform](#), [/sleep](#).

Each line represents a command to perform, see [Scripting Commands](#) for more information.

The lines are evaluated as scripts, so words starting with a \$ or + must be escaped using \$\$+ text and % \$+ text.

Run these commands on connect

When checked, all the commands will be performed when the server connects, otherwise they will be ignored.

Files

commands.png	19.9 KB	02/10/2017	Per Amundsen
--------------	---------	------------	--------------