

### Serverlist

The Serverlist allows you to add your networks/servers, add your user information, network options, login options, setup channels to join and run commands when it connects.

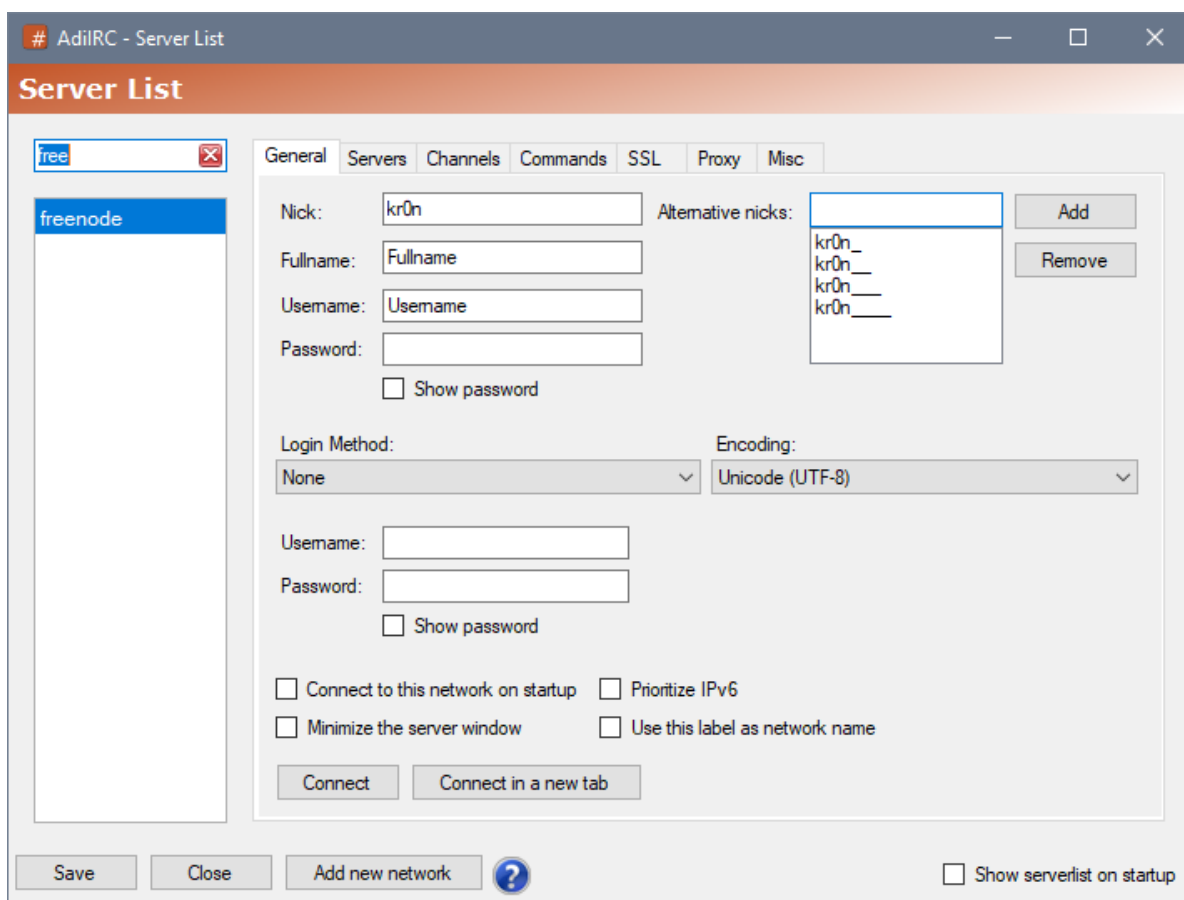
It can be opened by pressing the CTRL + S hotkey, by typing [/serverlist](#) or by opening Server -> Serverlist in the [Menubar](#).

Tip. All servers can be connected from [Menubar](#) -> Server -> All Servers.

See also [/server](#), [/serverlist](#).

### Search/Filter Networks

In the left corner you can type the name of the network to quickly filter it into view.

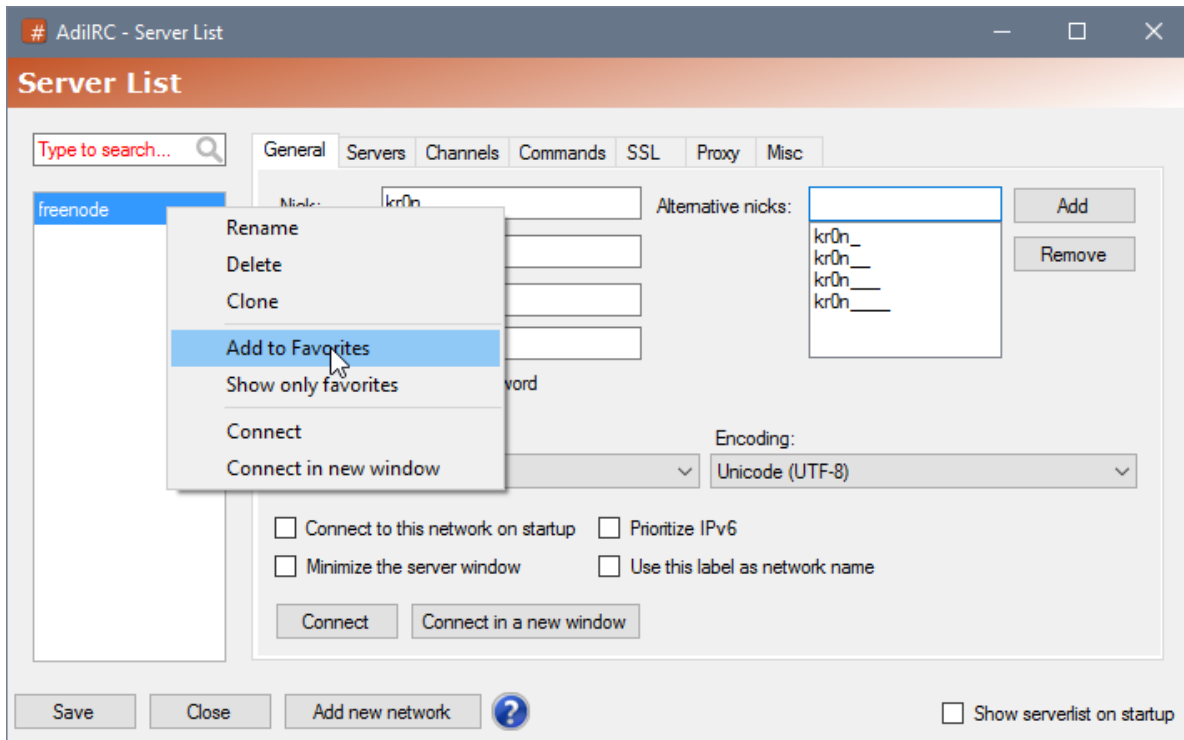


### Move networks up/down

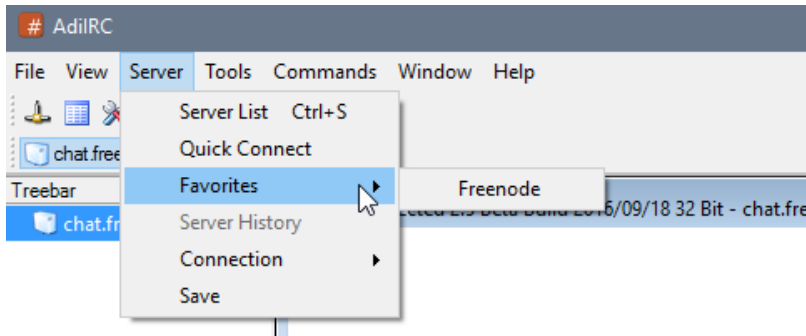
Networks can be moved around by left-clicking, then mouse drag/drop the network onto another network.

### Favorites

You can add a networks to the favorites by right-click it and chose "Add to Favorites", you can also enable "Show only Favorites" to hide all networks not in your favorites list.



Favorites networks can also be accessed from the Server -> Favorites menu in the [Menubar](#).

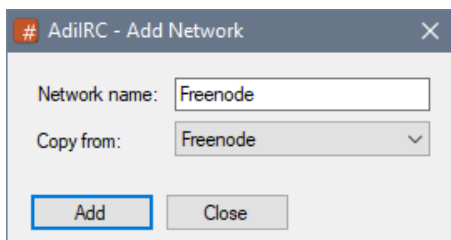


## Save serverlist

Serverlist can be saved by pressing the "Save" button or by pressing the CTRL + S hotkey.

AdilIRC will also warn you when closing the Serverlist window if there are any unsaved changes.

## Add new network



Enter a network name to use for this network.

You can also select a template in the dropdown which will add the correct hostname and port for most well known networks.

## Show serverlist on startup

If enabled, the Serverlist will be shown when AdilIRC starts.

## Options

- [General](#)

- [Servers](#)
- [Channels](#)
- [Commands](#)
- [SSL](#)
- [Proxy](#)
- [Misc](#)
- [IRCV3](#)

## Files

---

favoritesmenu.png	11.9 KB	09/19/2016	Per Amundsen
addtofavorites.png	28.7 KB	02/10/2017	Per Amundsen
addnetwork.png	3.61 KB	05/20/2018	Per Amundsen
filter.png	30.5 KB	08/15/2019	Per Amundsen