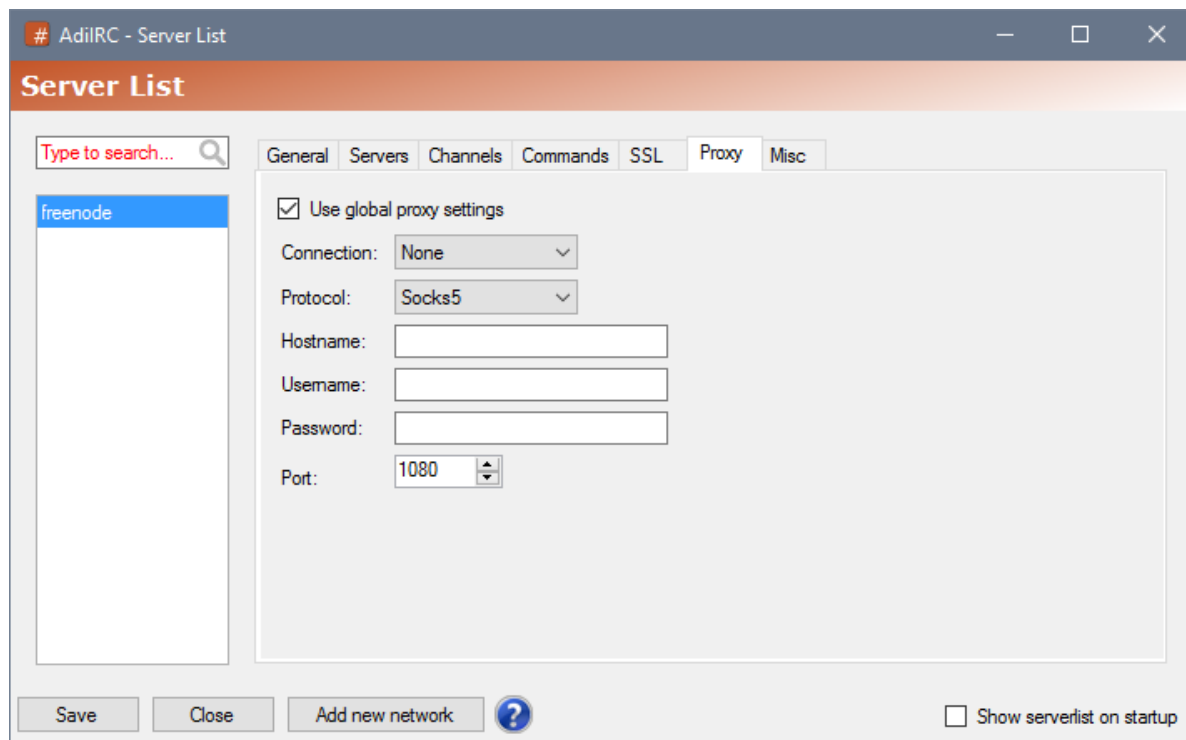


Serverlist Proxy

In the proxy tab, you can add custom [proxy](#) settings to this specific network.

A proxy server allows you to route traffic through a different connection/ip address.



Use global proxy settings

Enables or disables global proxy settings.

Connection

Sets the types of connections the proxy should be enabled for.

None - Disable proxy for all types.

Server - Enables proxy for the server connection.

DCC - Enables proxy for the [DCC](#) connection.

Both - Enables proxy for both server and DCC connections.

Protocol

Sets the proxy protocol type to connect to.

Hostname

Proxy server hostname to connect to.

Username

Proxy server username to use, if any.

Password

Proxy server password to use, if any.

Port

Proxy server port to connect to.

Files

proxy.png	22.2 KB	02/10/2017	Per Amundsen
-----------	---------	------------	--------------